

ILF ALPHA 173HP



ENERGREEN[®] *America*
Professional Machines 

SELF-PROPELLED
HYDROSTATIC
MACHINES



ILF SELF-PROPELLED

SELF-PROPELLED
HYDROSTATIC MACHINES

New



90°
ROTATING
CABIN

BRUSHCUTTER

Brushcutter with Multifunction Arm

ILF ALPHA

Energreen presents the new self-propelled hydrostatic machine ILF Alpha.

A high technology level machine that guarantees high performances, safety and working flexibility. Born from an award-winning project recognized by the biggest customer of the green maintenance.

ILF Alpha does not lose the features which has made unique these tool carrier machines with telescopic arm: visibility, multifunctionality, ability, performance etc.

ILF Alpha can be equipped with 3 different types of arm with different lengths which have various equipment.



STRENGTHS

ILF ALPHA



STRENGTHS



Safety and Comfort

- 90° rotating cabin homologated FOPS-ROPS
- High visibility panoramic windscreen
- Excellent working ergonomics
- SCD Stability Control Device



Quality

- 10" LCD Display ECI *Energreen Control Interface*
- JD 173 HP Stage V powerful engine
- Main parts made with special steel
- EPA Tier 4f emission
- Heavy Duty hydrostatic transmissions



Multifunctional

- Three types of arm: F, T, 3P
- Many tools available
- Green maintenance, forestry work, winter viability
- Front and rear attachment for tools



Productivity

- Sturdy and flexible telescopic arms
- Bidirectional work
- Activity with several combined tools
- Easy and smart to use
- 360° cabin visibility



F12
ARM

THREE DIFFERENT ARM SHAPES



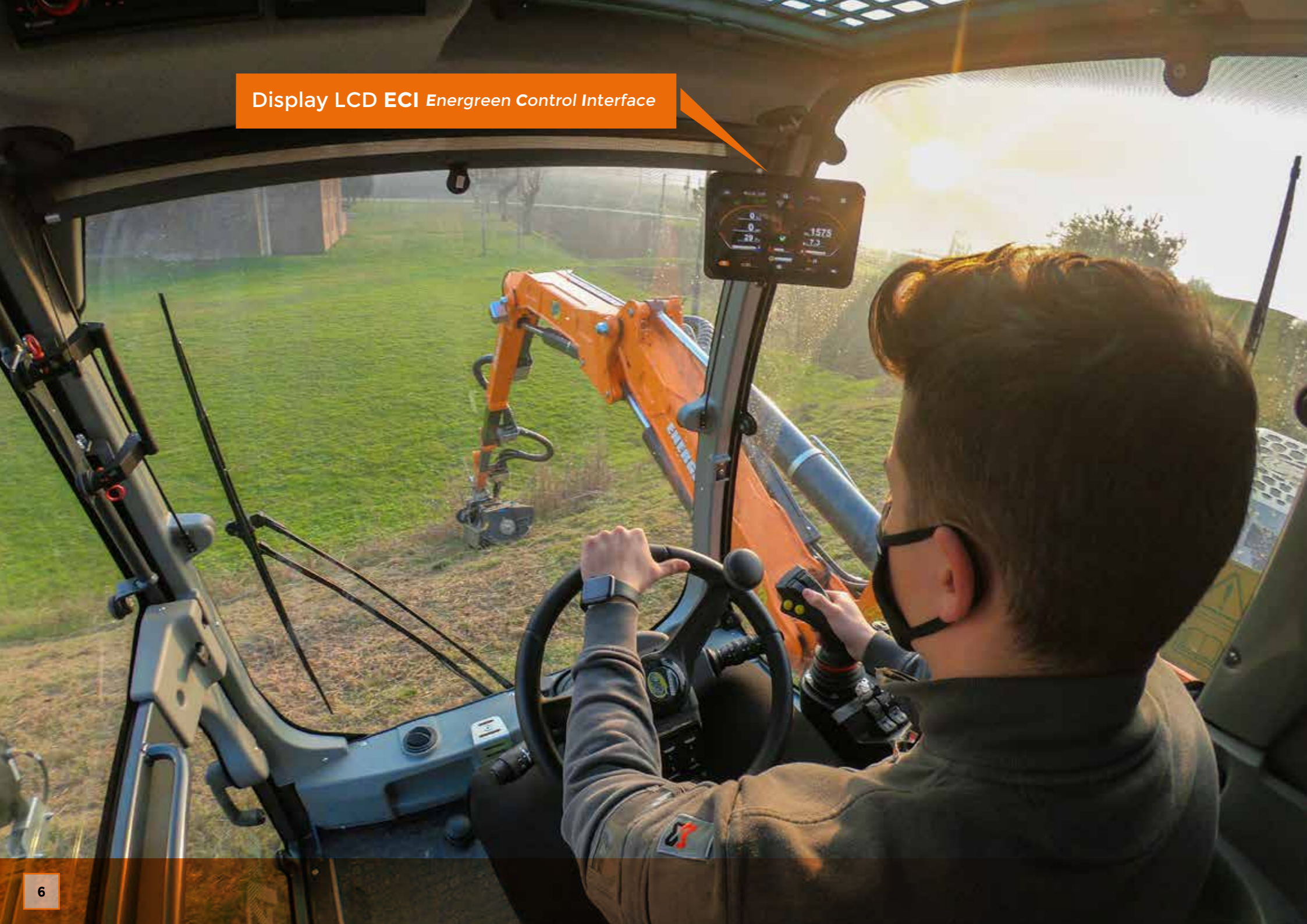
ARM **F**



ARM **T**



ARM **3P**



Display LCD ECI Energreen Control Interface

360° VISIBILITY

Complete visibility of the working environment

Visibility is an essential element for a correct and safe use of the machine while working and moving.
Visibility has always been one of Energreen strengths!

ILF Alpha has a comfortable and spacious cabin, equipped with a large windscreen which allows the operator to have an efficient and total view of the work, keeping a high level of comfort and physical wellness.
In terms of safety, the cabin is certified by FOPS-ROPS tests: anti-tipping, against the risk of falling objects, soundproofed, provided with an efficient cooling system, and equipped with all that features necessary to assure the operator a safe and comfortable working environment.

The 90° rotation of the cab makes the cut of the grass on both directions much easier. The rotating cabin allows the operator to always keep the correct body posture, avoiding stress and backpain or stiff neck, as well as managing the work with great comfort and care.



ROTATING CABIN



CABIN COMFORT



Maximum Safety and Comfort

ILF Alpha cabin is homologated according to the FOPS-ROPS regulation that guarantees the protection against overturning and objects fall. The cabin is completely isolated and efficiently air-conditioned thanks to a sealing system: soft gasket are settled on fixed and mobile glasses and the cabin is mounted on elastic supports on sustain points. In this way, this multifunction machine is suited for working in dusty and noisy environments for many hours per day, still keeping a high level of comfort.

The cabin is available in three versions: **STANDARD - COMFORT - PRESTIGE**



CABIN STANDARD

- 90° rotating cabin
- FOPS-ROPS homologated cabin
- 10" ECI Display
- Tilting and height-adjustable steering column
- Electronic direction control lever
- Adjustable armrest with Joystick
- Front windshield washer wiper
- Air conditioning with anti-pollen filter
- Retractable sunshade on front windshield
- Left mirror
- Height-adjustable LED beacon
- Cabin door partially openable
- Darked anti-UV rear window, partially openable
- Lateral documents holder
- Automatic LED courtesy lights
- Emergency glass break hammer
- External electrical socket for 12 V services
- Internal 12 V DC socket
- Two-way USB socket
- Clothes hangers
- GRAMMER MAXIMO XXL seat with air suspension and adjustable lumbar shock absorber



CABIN COMFORT

In addition to the «STANDARD CABIN» installation

- Cruise Control
- Instant reverse pedal
- DAB/Bluetooth stereo
- LED working lights



CABIN PRESTIGE

In addition to the «COMFORT CABIN» installation

- N. 1 reversing camera (integrated view in the ECI)
- Twin LED beacon
- Porthole with grille, curtain and windscreen wiper.
- Windshield wiper on the right side.
- 2 kg fire extinguisher
- GRAMMER MAXIMO EVOLUTION DYNAMIC seat with larger seat dimensions, air suspension system, longitudinal shock absorber, side suspension, lumbar shock absorber and active climate control system



ADJUSTABLE STEERING WHEEL



REVERSING CAMERA



TOP PORTHOLE WITH GRILLE

DISPLAY ECI

The new control system ECI

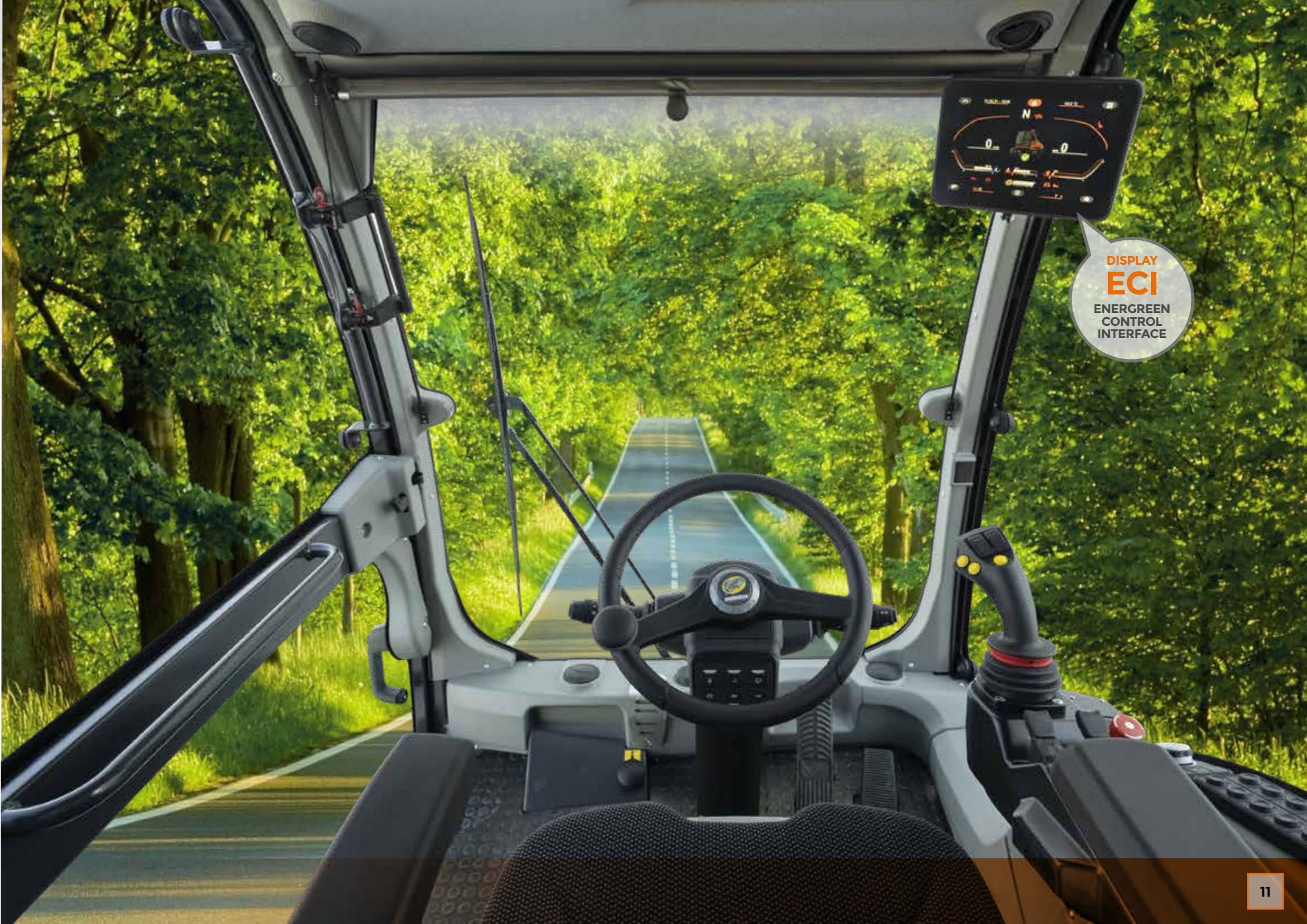
“Energreen Control Interface”

The new 10" color display (1) together with the new Power Track, the button panel and the Joystick create the new ECI system “Energreen Control Interface”, exclusive by Energreen.

This system allows to control all the functions of the machine in a simple and intuitive way, allowing also the customization of the screens based on the operator preferences.

The Power Track (2) is used for surfing inside the display. It is composed by multifunction buttons and a pushbutton for managing every function of the machine from the display.

Finally, the new Joystick (3) assures the control of the arm and of the tool with ease and the maximum precision.



DISPLAY
ECI
ENERGREEN
CONTROL
INTERFACE

TELESCOPIC ARM



F9.5
31'

F11
36'

F12
39'

TELESCOPIC ARM F

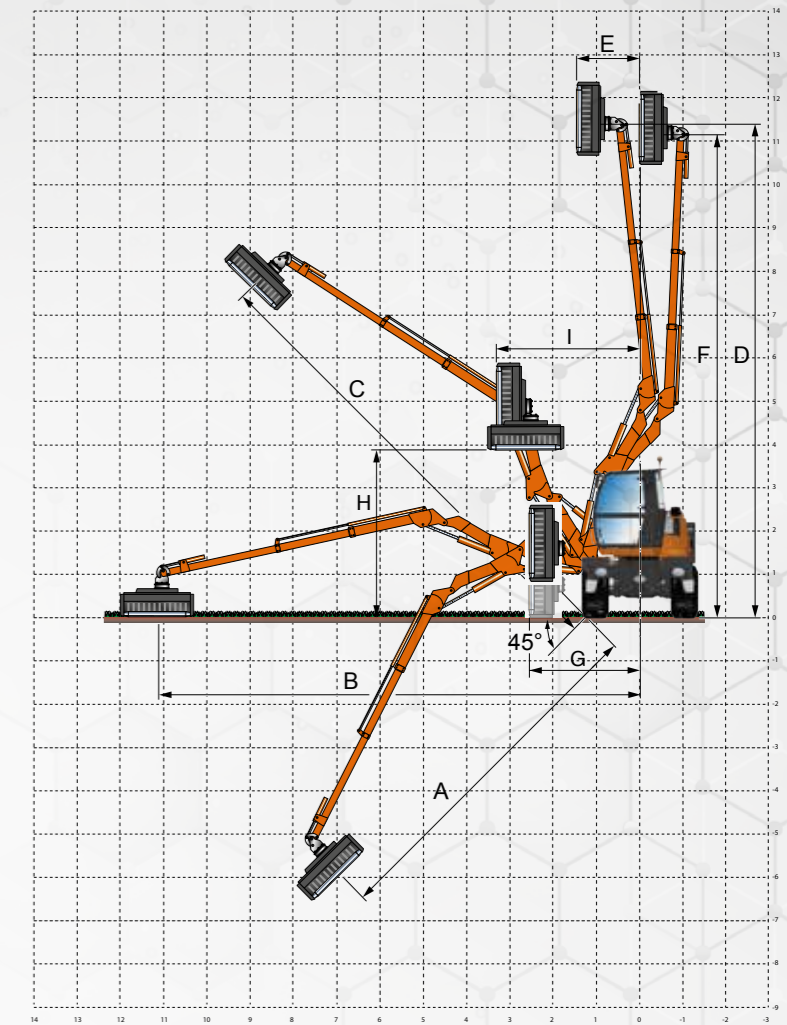


The telescopic arm **F** is ideal for grass cutting along roads or in narrow areas; its special shape makes the overcoming of obstacles - like road signals - easy and simple. It is also the ideal arm for aerial maintenance and pruning in vertical position.

Models:
F9,5 (31 ft)
F11 (36 ft)
F12 (39 ft)

FEATURES

- Telescopic arm up to 39 ft.
- Appropriate for roadsides or narrow areas.
- Easy overcoming of obstacles.
- Cutting of branches in vertical position.
- Versatile use of various tools.



MOD.	A	B	C	D	E	F	G	H	I
F9.5 (31')	21.6'	30.8'	30.6'	32'	5.7'	30.8'	7.5'	12'	9.5'
F11 (36')	27.2'	36.5'	36'	37.6'	5.3'	37'	8'	12.7'	9.7'
F12 (39')	29.7'	38.8'	38.6'	40'	5'	39.6'	8.1'	12.8'	10.7'

Technical and construction specifications may be subject to change without prior notice.

TELESCOPIC ARM T

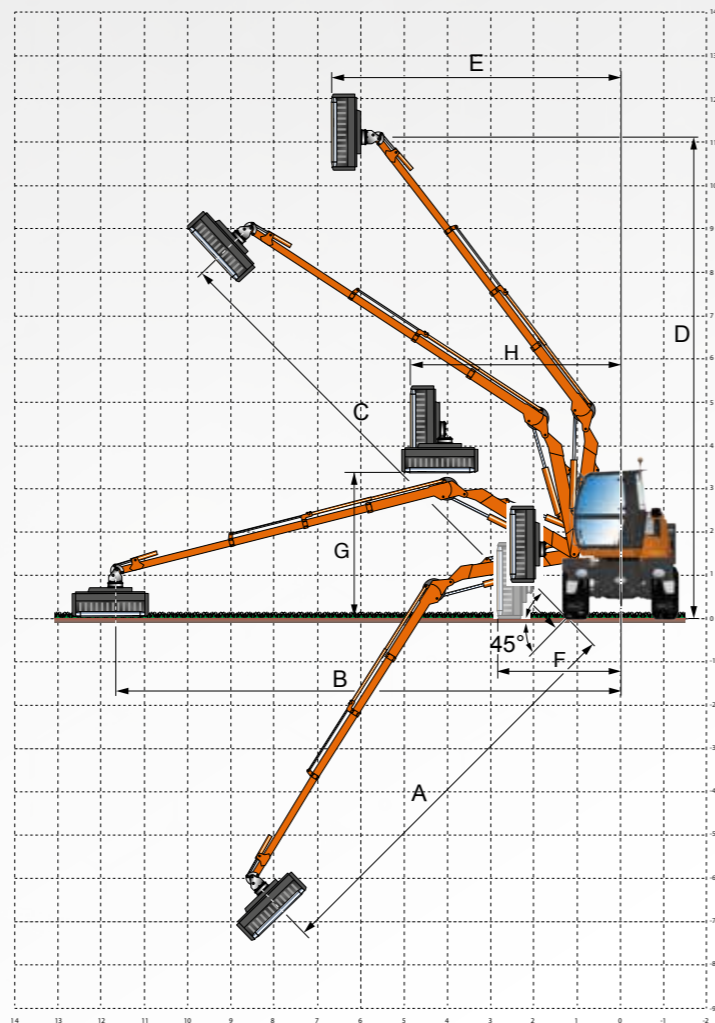


The telescopic arm **T** is sturdy and multifunction. It is able to safely work with every kind of equipment. This arm has been designed both for long distance activity and for working in narrow areas on the edge of the street.

Models:
T8 (26 ft)
T10 (33 ft)
T12 (39 ft)

FEATURES

- Braccio con estensione fino a 39 ft.
- Adatto per le lunghe distanze.
- Braccio lungo ma con dimensioni compatte.
- Taglio di rami in posizione verticale.
- Versatilità di utilizzo con vari attrezzi.



MOD.	A	B	C	D	E	F	G	H
T8	21.6'	27.2'	26.8'	27.3'	12.6'	8.6'	10.5'	14.5'
T10	26'	33'	32.6'	32'	16.8'	8.8'	11.6'	15'
T12	32'	38.8'	38.5'	36.6'	20.5'	9'	10.6'	15.7'

Technical and construction specifications may be subject to change without prior notice.

T8
26'

T10
33'

T12
39'

TELESCOPIC ARM 3P

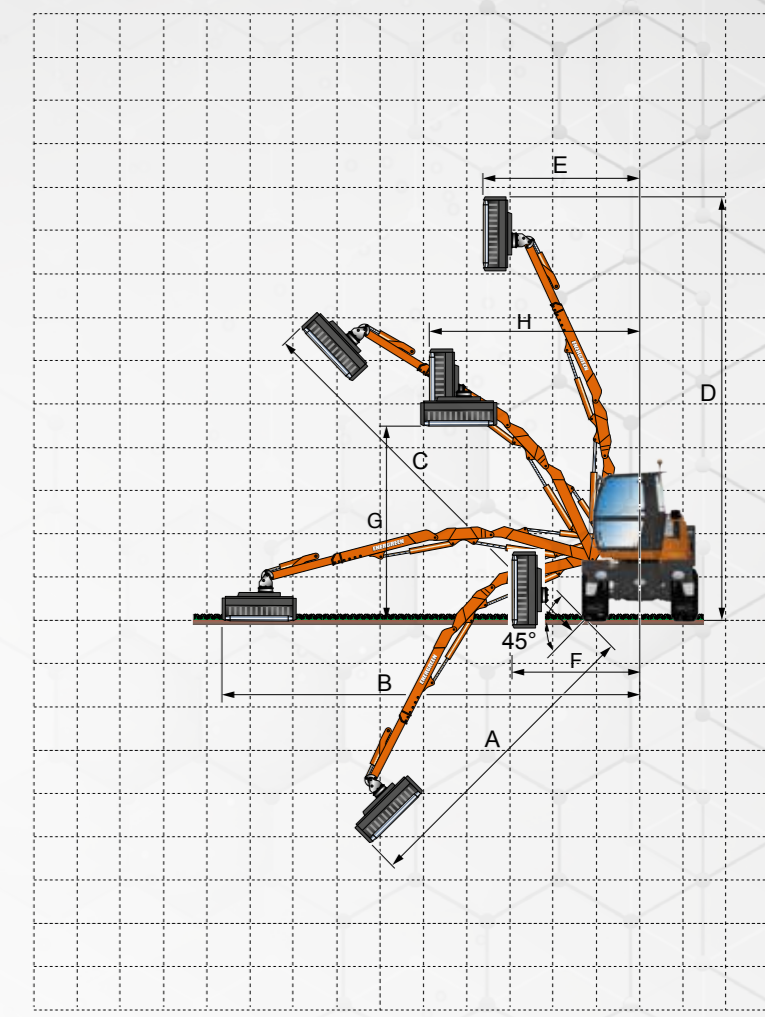


The telescopic arm **3P** has a sturdy and compact structure, divided in 3 pieces for allowing the overcoming of the typical obstacles when working along the routes. In addition, its geometry makes it ideal for working with tools like buckets for the cleaning of canals.

Model:
3P 9,7 (32 ft)

FEATURES

- Telescopic arm up to 32 ft.
- Ideal for roadsides or canals.
- Overcoming of obstacles
- Ideal for working with buckets
- Sturdy and compact structure



MOD.	A	B	C	D	E	F	G	H
3P 9.7 (32')	23.8'	31.6'	31.3'	32.3'	11.7'	9.3'	14.8'	15.5'

Technical and construction specifications may be subject to change without prior notice.



ACCESSORIES

A FRONT ATTACHMENT



LIFTER "HERCULES" (22046 lb)
(optional)



DIN PLATE 76060
(optional)

B REAR ATTACHMENT



BLOWER
(optional)



TOW HOOK

EQUIPMENT

THE SUITABLE TOOL FOR EVERY WORK

C



NEW SPEED
47" CUTTING HEAD



NEW SPEED
59" CUTTING HEAD



CONVEYOR HEAD
CUTTING HEAD WITH CONVEYOR BELT



FORESTRY HEAD
FORESTRY HEAD WITH FIXED TEETH



SAW BAR
CUTTER DISCS BAR



CUTTER BAR



POWER SHEARS



IRON BRUSH



DITCH CLEANER



ORANGE PEEL GRAPPLE



TRUNK PINCERS



FORC-ONE



EXTRA TRUNK
PRUNING SCISSORS-PINCERS



STUMP GRINDER



RIVER BUCKET
WEEDING-MOWING BUCKET



DITCH BUCKET

Only for the telescopic arm 3P

A



RAIBER
BARRIER MOWER



TRANSFORMER 840



DISCOVERY 840



ROTATOR UNIT
ROTATOR UNIT FOR 180° EQUIPMENT ROTATION

180°

EQUIPMENT

MANOEUVRABILITY



2 STEERING WHEELS



4 STEERING WHEELS CONCENTRIC



4 STEERING WHEELS PARALLEL



Agility and Accuracy in the Movements

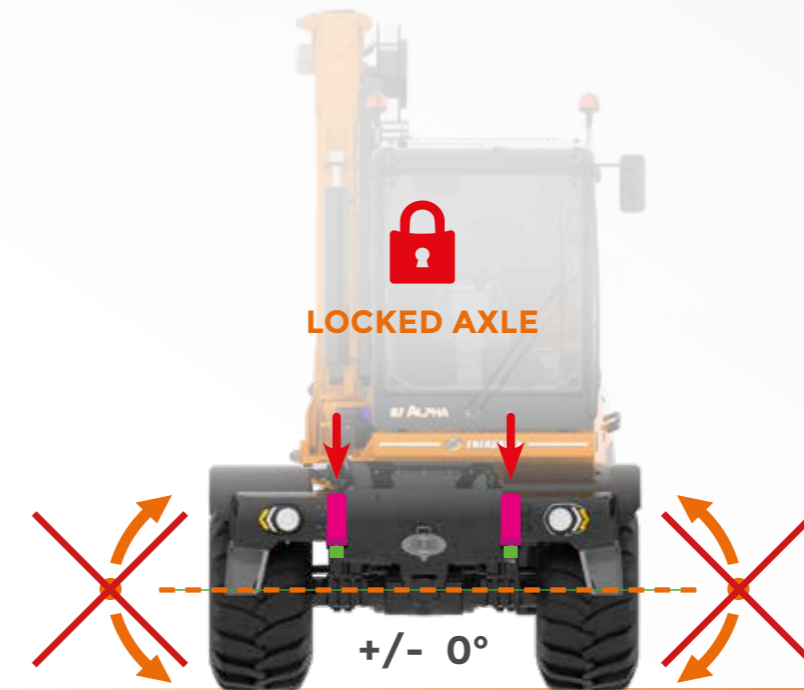
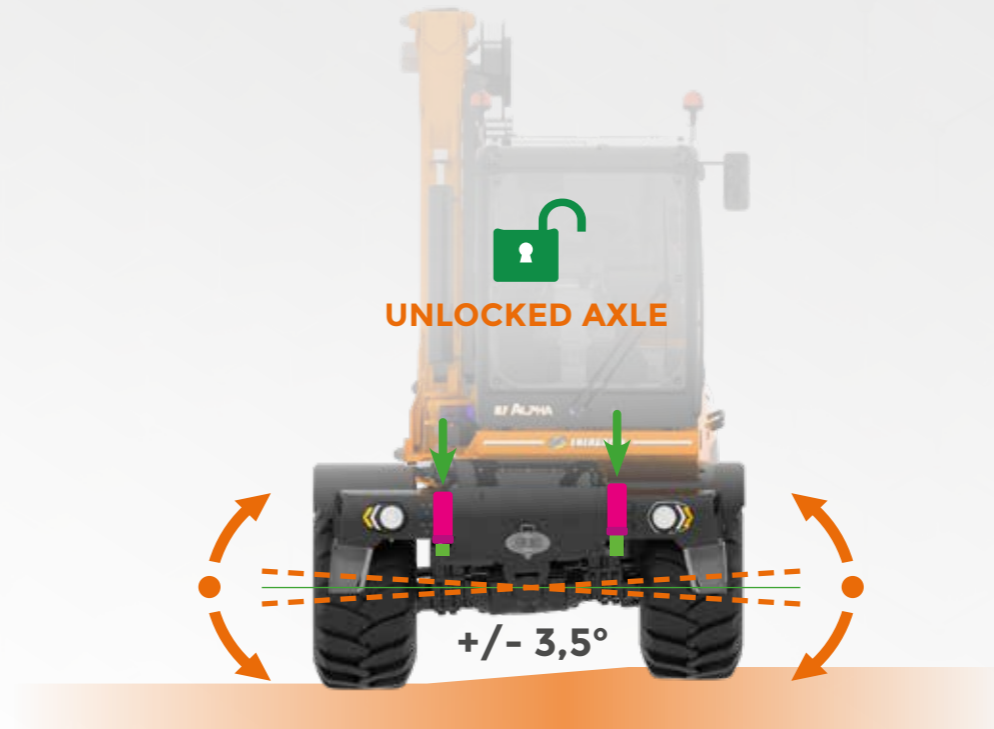
The polyvalent soul of this machine is highlighted also from the 4-wheel drive traction system, all steering, hydraulically configurable from the cab control in 3 different operating modes:

- **2 front steering wheels**, for the maximum agility on road movement.
- **4 steering wheels**, a system that halves the turning range of the machine, ideal for working in narrow areas.
- **4 parallel steering wheels (crab)**, useful for moving special tools or for moving away from an obstacle.

STABILITY

SCD Stability Control Device

The SCD Stability Control Device allows to lock the front axle oscillation, increasing the stability of the machine, in order to guarantee the maximum level of performance and safety for the operator. This plus is composed by two hydraulic jacks fixed on the chassis of the machine and controlled by the innovative ECI system inside the cab.



ENGINE

ILF ALPHA



JOHN DEERE 4.5

John Deere Power Engine

ILF Alpha is equipped with a **John Deere 4.5 with 173 HP (129 kW)**, 4-cylinder inline engine with liquid-cooled, external exhaust gas recirculation and **EU Stage V** emissions.

The powerful Common Rail injection system with high pressure with 2 valves per cylinder and the electronic engine control (EMR) with intelligent link to the drive management ensures optimum engine performance at low fuel consumption.

- Minimum consumption of operative liquids compared to competitors.
- Technical support and diagnosis provided by John Deere's worldwide service network.

EASY ACCESS FOR MAINTENANCE



FIVE INDEPENDENT HYDRAULIC SYSTEMS:
1. MOVEMENT
2. CUTTING HEAD
3. STEERING
4. BRAKING
5. ARM FUNCTIONS

FIXED REAR AXLE

4 WHEEL DRIVE

HYDROSTATIC TRANSMISSION

100% FRONT AND REAR DIFFERENTIAL LOCKING

JACK FOR OSCILLATION CONTROL

HD-FRAME IN STRENX®

INLET HIGH PRESSURE FILTER TO THE DISTRIBUTOR

NEGATIVE PARKING BRAKE (FRONT AXLE)

BRAKE DISCS IN OIL BATH ON BOTH AXLES

QUALITY

EASY MAINTENANCE

Easily accessible for maintenance

For meeting the productivity and safety needs of the clients, Energreen wanted to integrate in the self-propelled machine **ILF Alpha** a concept of ordinary maintenance which is simple, fast and efficient.

All the strategic points for the daily checks are easily accessible from the floor: the engine room and the various compartments for oil, diesel and AdBlue refueling are at hand.

All this makes **ILF Alpha** a cutting-edge machine, where the performance and the control of the operator are put in first place.



THE ENGINE COMPARTMENT IS EASILY ACCESSIBLE FOR ORDINARY AND EXTRAORDINARY MAINTENANCE



HANDLE

INTEGRATED STEP

MOVING STEP

DIESEL AND OIL SUPPLY COMPARTMENT AND FILTER MAINTENANCE

ADBLUE SUPPLY COMPARTMENT

OPTIONAL



TYRES



AUTO LUBE Automatic greasing system

The **AUTO LUBE** system is built with an electric greasing pump, electronically controlled, that allows to work independently and to be programmed to ensure the best lubrication of pins and bushing of the arm and of hydraulic cylinders. Moreover, this system allows an important reduction of maintenance hours.

Simple and intuitive JOYSTICK

High quality joystick with proportional main controls that allows a precise and smooth control of the equipments. It allows you to move up to 3 arm functions at the same time with an excellent gradual movement.

WIDE RANGE OF TIRES FOR EVERY TYPE OF GROUND AND WORK

STANDARD

MICHELIN
445/70 R 22.5



OPTION A

CONTINENTAL / MITAS
MPT 445/65



OPTION B

ALLIANCE 18 PR
600/50 331



OPTION C

TRELLEBORG
650/45 T440



OPTION D

NOKIAN COUNTRY KING
600/50 R 22,5 10F



OPTIONAL



Led working light kit



Cabin porthole



Reverse gear camera



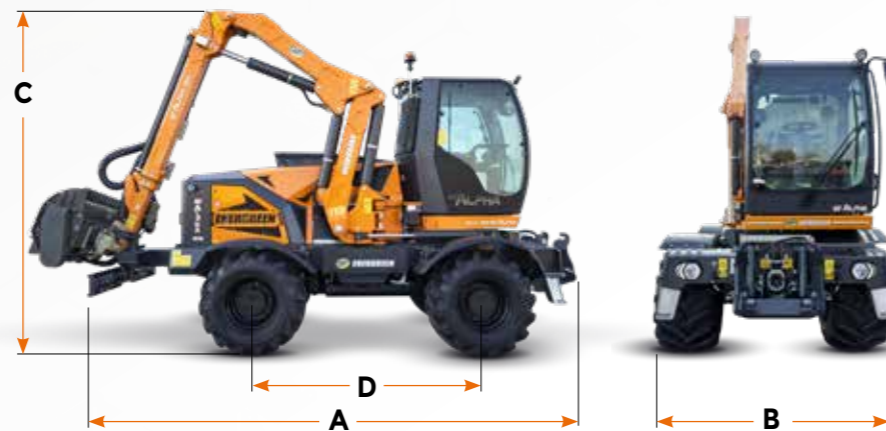
Moving ballast with step

DIMENSIONS

DIMENSIONS AND WEIGHT

A Length	213 in
B Width	
• Tires 445 mm (17,5")	94 in
• Tires 600 mm (23,6")	99 in
• Tires 650 mm (25,6")	100 in
C Height	157 in
D Wheelbase	98 in
Machine weight without equipment	30.424 lb

VERSION WITH ARM F12



Technical and construction specifications may be subject to change without prior notice.

TECHNICAL DATA

CABIN

Rotating cabin	Up to 90°
Steering wheel	Adjustable
Joystick	Electronic
Air conditioning	Electronic
Rear glasses	Darkened anti UV
Cabin door	Openable 60-40
Adjustable seat	Air suspension
Power socket	12 V
Battery switch	Automatic
Cabin homologation	FOPS-ROPS

ENGINE

Brand	John Deere 4.5 4045CI
Type	4 Cylinders Diesel
Power	173 HP (129 kW)
Injection	Common Rail - 4 valves
Exhaust emissions	EPA Tier 4f
Alternator	200 A.
Pre-heating air engine intake	
Air intercooler radiator	
Reinforced cooler radiator	
Self-cleaning reversible fan	
Fuel tank capacity	65 gal
AdBlue capacity	6 gal

HYDRAULIC SYSTEM

Closed circuits	
Cutting heah	Piston
Translation pump	Piston
Open circuits	
Arm movement	Gear (Optional: Piston)
Brakes system	Gear
Steering system	Gear
Hydraulic distributor	6/7 sections
Oil flow attachment	42 gal/min
Oil pressure attachment	4206 psi

TRASMISSION AND BRAKES

Transmission	Hydrostatic
Traction	2x4 - 4x4
Speed variation	0 - 24 mph
Manual gearbox	2 gears
Wheel alignment	Electronic
Front axle	Oscillating
Front axle block	Hydraulic
Steering axles	2 axles
Front axle block	100%
Rear axle block	100%
Parking brake	Negative
Service brakes	8 discs

Technical and construction specifications may be subject to change without prior notice.



ILF ALPHA

     **ENERGREENAMERICA.COM**



SELF-PROPELLED HYDROSTATIC MACHINES



Local dealership



ENERGREEN[®] *America*
Professional Machines 

ENERGREEN America · 1242 Nowell Dr · Augusta · GA 30901 · USA
Phone CA 510 593 3144 · Phone GA 706 945 2800
info@energgreenamerica.com · www.energgreenamerica.com

PROFESSIONAL MACHINES AND EQUIPMENT



ELUSD1800101-11021 - © Energreen America 2021 - All rights reserved
Photo, technical and constructive characteristics subjected to modification without reporting requirement.