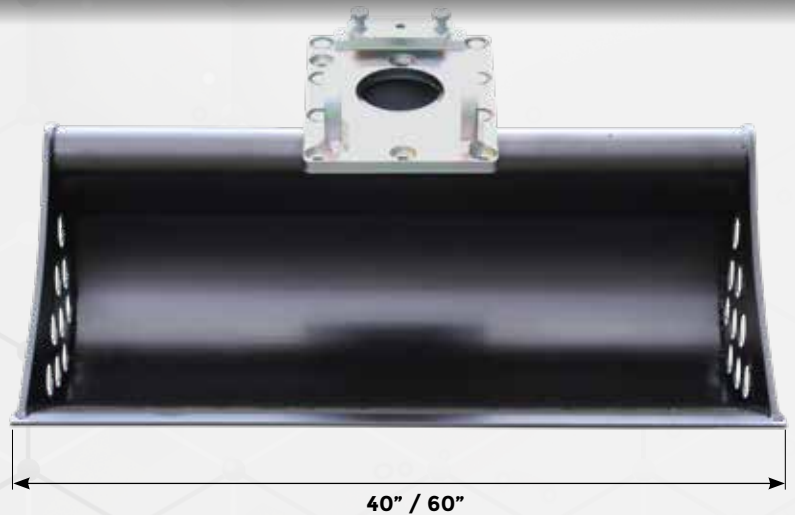
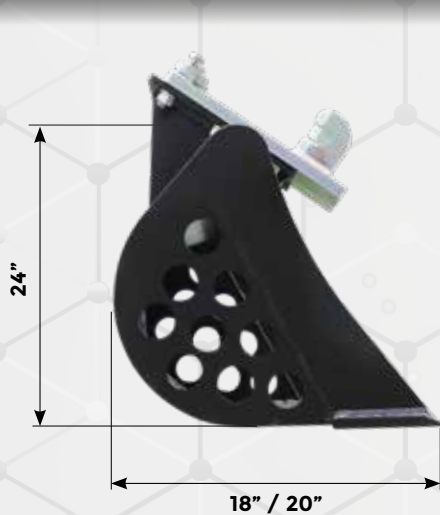
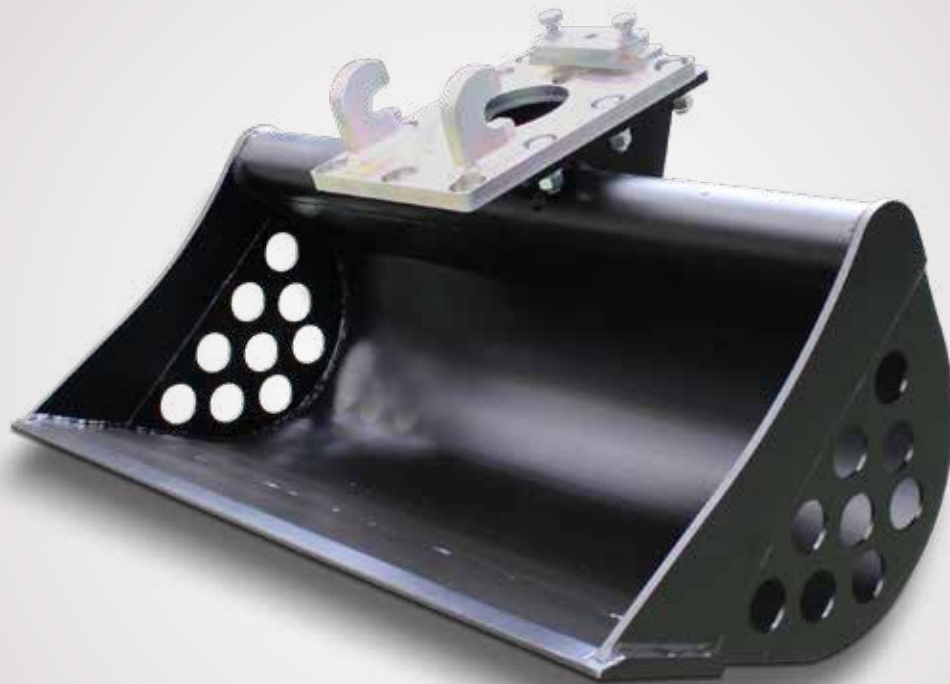




**ENERGREEN**<sup>®</sup> *America*  
Professional Machines 

# DITCHBUCKET



# DITCHBUCKET

QUICK ATTACHMENT PLATE

HOLES FOR WATER SPILL



FULLY MANUFACTURED  
IN HARDOX® 400 STEEL

LEVELING BLADE

**DITCH BUCKET** designed for professional use in green maintenance. Created primarily for all maintenance works in embankments and roadsides and cleaning of canals, rivers, water drains and environmental remediation works, where the shredded material collection is necessary in order to prevent clogging of the regular flow of water. The Ditch Bucket is available in two working widths of 40" or 60". The bucket has been designed to be fitted with a special fastening plate fastened to the Energreen self-propelled ILF range telescopic booms.



EUSEQDS70500 - 07/2021 - © Energreen America 2021 - All rights reserved - Photo, technical and constructive characteristics subjected to modification without reporting requirement.

## TECHNICAL DATA

	DITCH BUCKET 40"	DITCH BUCKET 60"
Working width	40"	60"
Height	24"	24"
Working depth	18"	20"
Working pressure	220 bar / 3190 psi	220 bar / 3190 psi
Load capacity	3,5 ft <sup>3</sup>	7 ft <sup>3</sup>
Weight	176 lb	286 lb